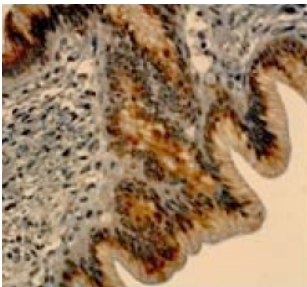


There is one simple fact about cancer that is often overlooked: most cancers can be cured using today's treatments if tumors are detected at an early stage, before they start to spread throughout the body.

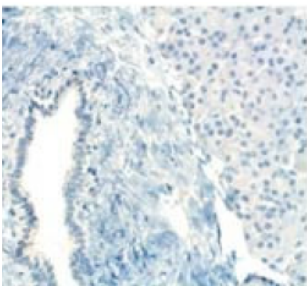
The goal of the Canary Project is to develop new blood and imaging tests that will allow doctors to find cancers at the earliest possible stage, eliminating the suffering associated with advanced cancers. In particular, the Canary Project is focusing on cancers of the ovary, prostate, lung and pancreas.

The Canary Project is based at Stanford University (California) and involves a large consortium of researchers across North America. Here in Victoria, scientists at the BC Cancer Agency are generating molecular tools called "antibodies" and "immunoassays" which are the basic building blocks of blood and imaging tests for cancer. Ultimately, the tools we create in Victoria will be incorporated into new cancer tests for clinical use.

By supporting the Canary Derby, you are supporting this critical work at the BC Cancer Agency in Victoria. You are helping to create a new generation of cancer tests that will detect cancer at its earliest, most curable stage. You are helping us realize the vision of a world free from cancer. Thanks for your support!



Early pancreatic cancer



Normal pancreatic tissue

The brown staining in the early pancreatic cancer sample (top) but not the normal pancreatic tissue (bottom) indicates binding of an antibody to cancer cells.